



Matterport for Architecture, Engineering & Construction

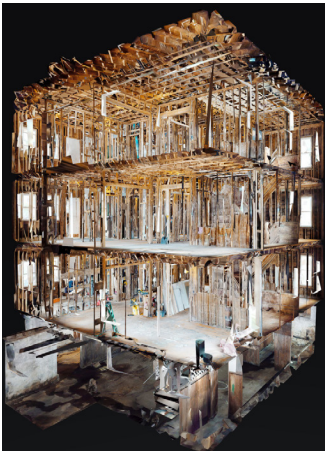
Explore Matterport's digital twin technology— the comprehensive way to streamline your project workflow by leveraging our 3D capture technology to expedite site documentation, as-built creation and stakeholder collaboration anytime, anywhere.

The Matterport Advantage

Our 3D data platform is a powerful, accurate, and quick way to document a building or property. With a compatible camera, you can capture anything from small to large spaces — both inside and outside — with the highest level of detail.

By incorporating Matterport into your workflow, you can save significant amounts of time and resources.

- Reduce BIM modeling costs by over 70%
- Decrease travel and site visits by 50%
- Improve project initiation timelines and enable easy collaboration



Documentation

Capture complete and accurate as-built documentation, at a fraction of the cost and time of traditional methods.



Construction Progress

Increase trust by keeping all stakeholders up-to-date by using weekly scans to document site progress.



Safety & Compliance

Verify site conditions and remotely monitor job site health, safety and welfare compliance.

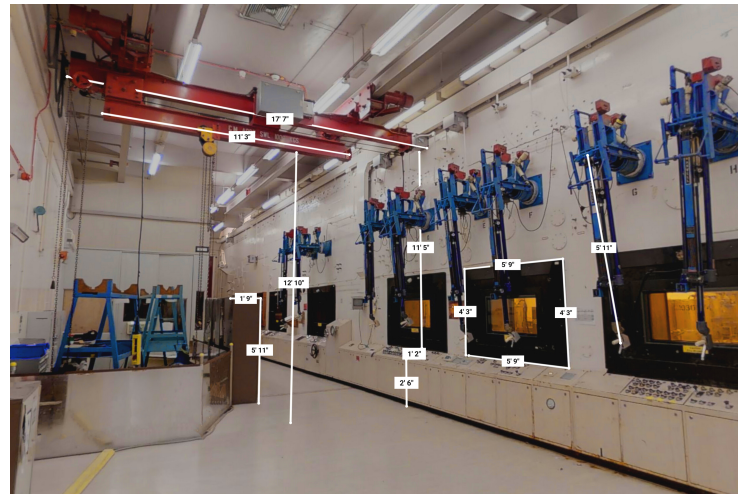


Project Turnover

Improve facilities management capabilities and customer service by sharing a full digital twin of the completed project.

Matterport's AI-based enterprise platform allows employees and customers to show and communicate key project milestones, perform remote inspections, and so much more.

A Matterport digital twin gives immersive access to critical building intelligence, which enables faster and easier collaboration, increased productivity, added efficiencies in workflow, and overall cost reduction.



Case Studies

Perkins&Will

In 2020, Perkins&Will's digital revolution took a leap forward, turbocharged by the COVID-19 pandemic. While the company couldn't send teams to job sites, it had no choice but to come up with new ways to virtually visit spaces, share what it found with widely dispersed teams, and navigate the approval process.

Matterport synthesizes immersive 3D images with spatial and measurement data that can be explored by anyone in the world with an internet connection. One person can visit a site and capture it better than a team of photographers using still photography. Even after the coronavirus crisis ends, Perkins&Will intends to continue using Matterport to reduce its footprint on job sites, speed up processes, and give everyone inside and outside the company the information they need to make highly informed decisions.

Results:

- Increased speed, efficiency, and productivity
- Two-thirds reduction in physical site visits
- Enhanced creativity

"Imagery and measurement data are combined in a single package with blazing speed. I've even used my iPhone and the Matterport Capture app to scan spaces. Clients and potential clients think we're just taking photos. When we present a full scan of a space the next day, they're awestruck."

Nick Cameron, Director of Digital Practice

Gilbane

Founded as a family company carpentry business in 1870, Gilbane operates more than 50 offices in the U.S. and other countries successfully delivering several billion square feet of project completions. The firm was ahead of the curve when the COVID-19 pandemic forced many companies to scramble for ways to boost remote work productivity. An avid user of Matterport, Inc. spatial data solutions since 2016, Gilbane had already standardized use of digital twins for its job sites, accelerating its design-build processes with great success.

For the company, the ability to continually improve processes helps drive new success, with Matterport technology enabling teams to save more than 1,000 hours on project work by eliminating travel and site visits to 300 sites.

Results:

- Saved 168 working hours in a recent design team virtual meeting, reviewing 21 project sites in 4 hours using digital twins
- Cumulative time savings of more than 1,000 hours by eliminating travel and site visits to 300 sites
- Realizing 25% to 30% in time and money savings by accelerating design-build phases

"With a Matterport digital twin, we can get on the same page with customers to confirm property conditions together, using reliable visual information. It makes it easier to have important conversations about how to address any challenges that have been revealed."

Joel Vande Boom, Director of Strategic Projects
– Midwest, Gilbane